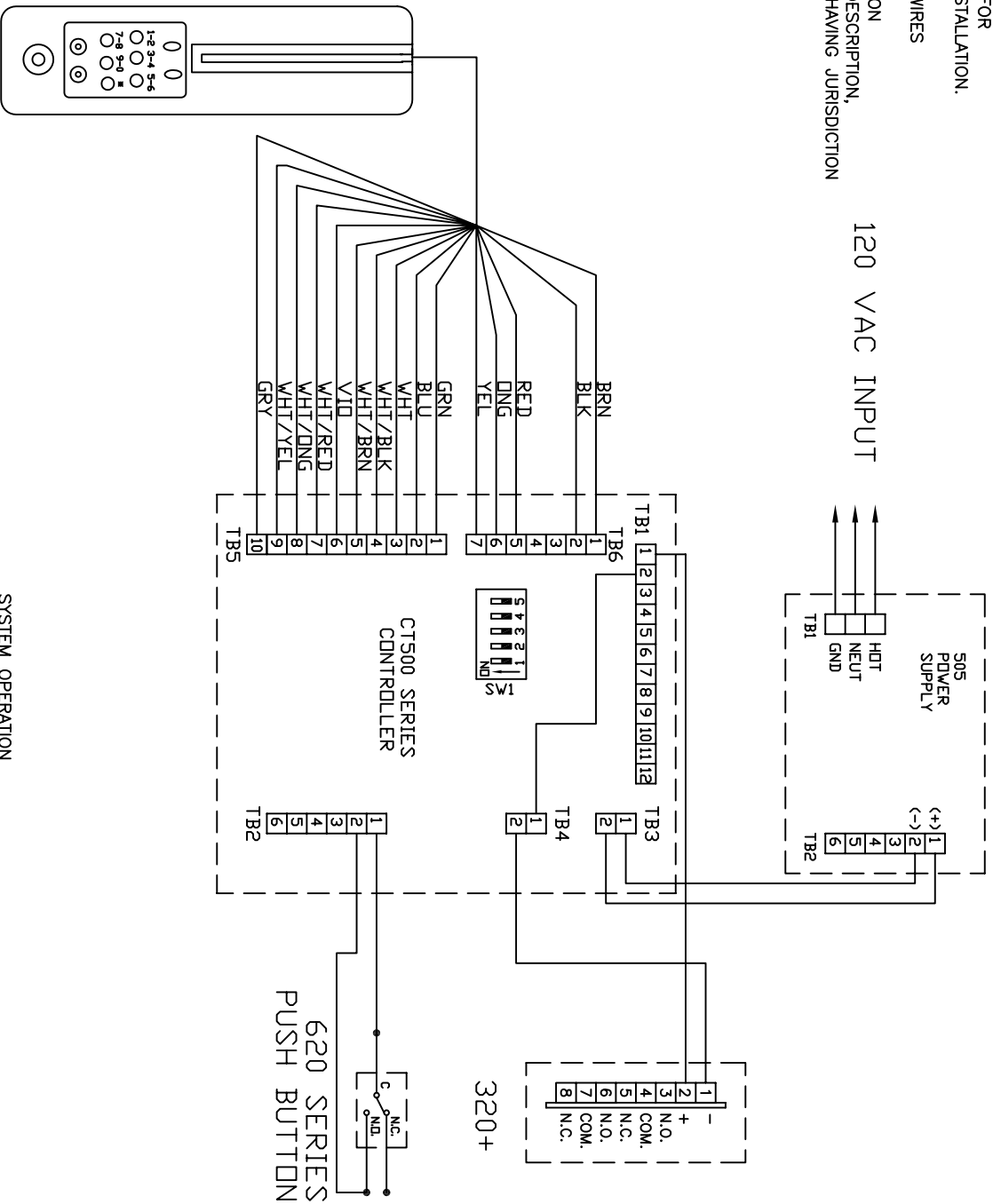


NOTES

1. ALL LOW VOLTAGE WIRING TO BE STRANDED, MULTI-CONDUCTOR, COLOR CODED WIRE WITHOUT SPLICES. A MINIMUM OF TWO SPARE CONDUCTORS IS RECOMMENDED. WIRING TO CONFORM TO APPLICABLE NATIONAL, STATE AND LOCAL ELECTRICAL CODES FOR CLASS 2 FIRE PROTECTION SIGNALING AND CONTROL DEVICES.
2. REFER TO DOCUMENTATION SUPPLIED WITH PRODUCT FOR IMPORTANT INFORMATION REQUIRED FOR PROPER INSTALLATION.
3. ~~USE 12 GAUGE WIRE FOR RED & BLACK EL POWER WIRES~~  
X UNUSED CONDUCTORS, INSULATE AND STORE.
4. USE 12 GAUGE WIRE FOR RED & BLACK EL POWER WIRES
5. THIS WIRING INFORMATION IS BEING PROVIDED BASED ON CUSTOMER SUPPLIED EQUIPMENT LIST AND FUNCTIONAL DESCRIPTION, AND MAY BE SUBJECT TO APPROVAL BY THE AUTHORITY HAVING JURISDICTION



CR90

SYSTEM OPERATION  
 DOOR SHOWN CLOSED AND SECURED  
 APPLYING PROGRAMMED CARD ON ENTERING CORRECT CODE  
 TO CR90 WILL RELEASE LOCK FOR PROGRAMMED TIME  
 DEPRESSING PUSH BUTTON WILL RELEASE LOCK

DRAWN BY: JW DATE 7/04  
 CHKD BY:  
 APP'D BY:

PROJECT NAME  
 IR-SYSTEMIZER

TITLE  
 CT500X320+ WIRING

**LOCKNETICS**  
 Security Engineering

DWG/PROJECT NO.  
 PAGE 1 OF 1

REV.