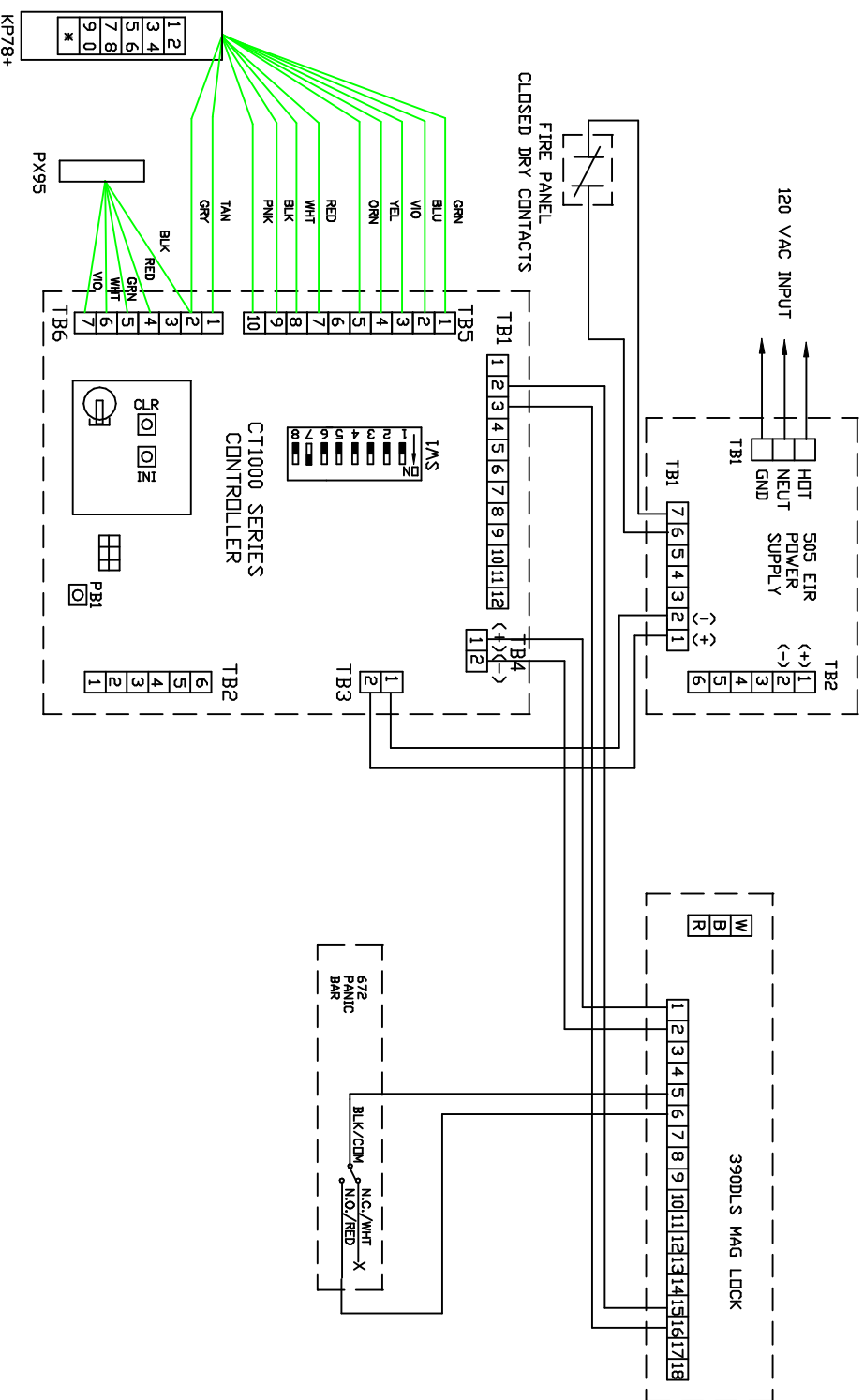


- NOTES**
1. ALL LOW VOLTAGE WIRING TO BE STRANDED, MULTI-CONDUCTOR, COLOR CODED WIRE WITHOUT SPLICES. A MINIMUM OF TWO SPARE CONDUCTORS IS RECOMMENDED. WIRING TO CONFORM TO APPLICABLE NATIONAL, STATE AND LOCAL ELECTRICAL CODES FOR CLASS 2 FIRE PROTECTION SIGNALING AND CONTROL DEVICES.
 2. REFER TO DOCUMENTATION SUPPLIED WITH PRODUCT FOR IMPORTANT INFORMATION REQUIRED FOR PROPER INSTALLATION.
 3. _____X UNUSED CONDUCTORS. INSULATE AND STORE.
 4. USE 12 GAUGE WIRE FOR RED & BLACK EL POWER WIRES
 5. THIS WIRING INFORMATION IS BEING PROVIDED BASED ON CUSTOMER SUPPLIED EQUIPMENT LIST AND FUNCTIONAL DESCRIPTION, AND MAY BE SUBJECT TO APPROVAL BY THE AUTHORITY HAVING JURISDICTION

- SYSTEM OPERATION**
- SYSTEM SHOWN CLOSED AND SECURED
 - ACTIVATION OF CT1000 WILL RELEASE LOCK
 - ACTIVATION OF 672 BAR WILL RELEASE LOCK AFTER DELAY PERIOD
 - ACTIVATION OF FIRE PANEL WILL RELEASE LOCK



DRAWN BY: JWV
 CHKD BY:
 APP'D BY:

DATE 5/03
 PROJECT NAME
 IR-SYSTEMIZER
 TYPICAL WIRING

TITLE
 CT1000XPX95XKP78+, 505EIR, 390DLS, 672BRG

DWG/PROJECT NO.
 1180
 PAGE 1 OF 1

REV.

