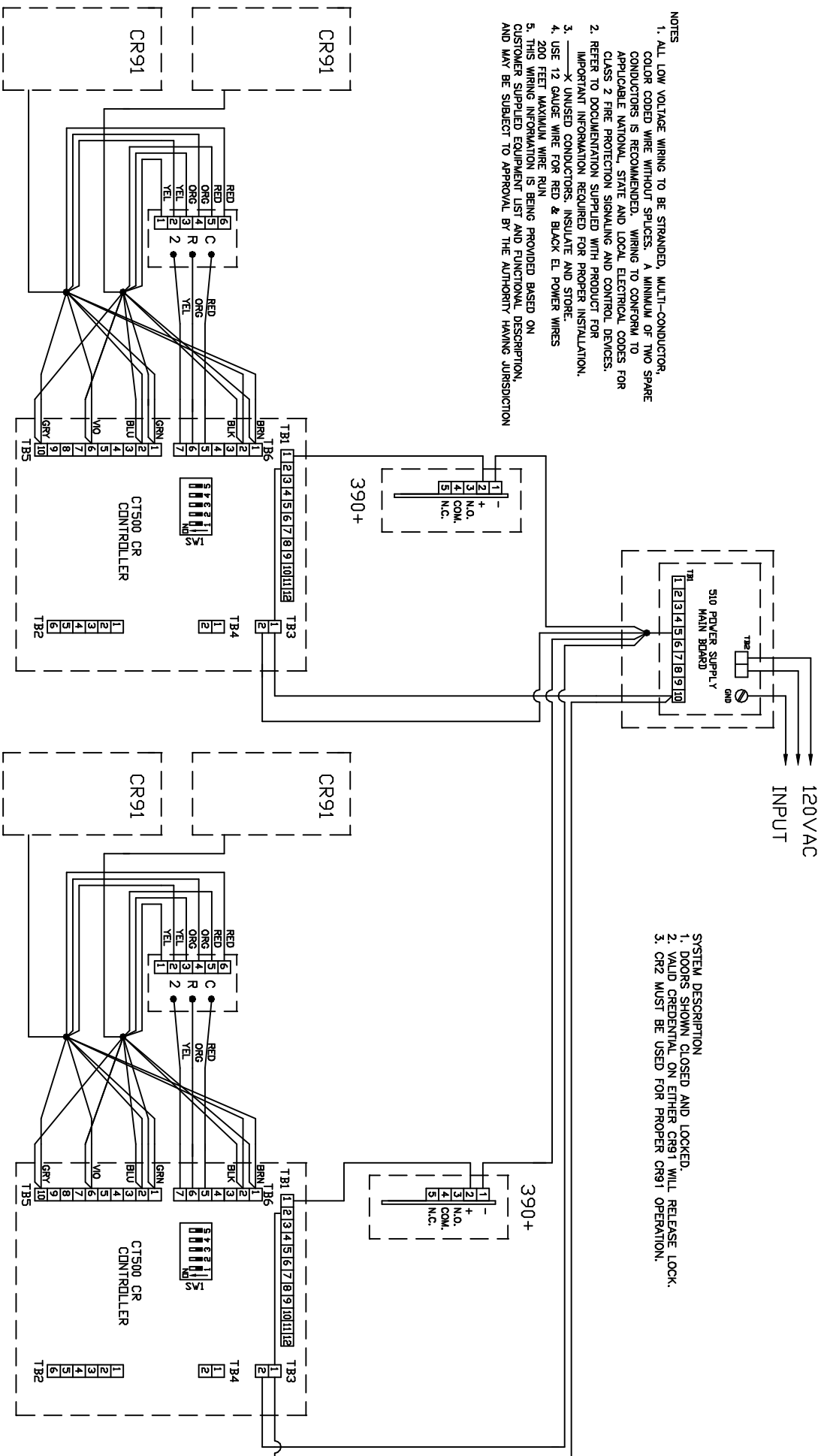


- NOTES
1. ALL LOW VOLTAGE WIRING TO BE STRANDED, MULTI-CONDUCTOR, COLOR CODED WIRE WITHOUT SPLICES. A MINIMUM OF TWO SPARE CONDUCTORS IS RECOMMENDED. WIRING TO CONFORM TO APPLICABLE NATIONAL, STATE AND LOCAL ELECTRICAL CODES FOR CLASS 2 FIRE PROTECTION SIGNALING AND CONTROL DEVICES.
 2. REFER TO DOCUMENTATION SUPPLIED WITH PRODUCT FOR IMPORTANT INFORMATION REQUIRED FOR PROPER INSTALLATION.
 3. X UNUSED CONDUCTORS, INSULATE AND STORE.
 4. USE 12 GAUGE WIRE FOR RED & BLACK EL POWER WIRES
 5. 200 FEET MAXIMUM WIRE RUN
 6. THIS WIRING INFORMATION IS BEING PROVIDED BASED ON CUSTOMER SUPPLIED EQUIPMENT LIST AND FUNCTIONAL DESCRIPTION, AND MAY BE SUBJECT TO APPROVAL BY THE AUTHORITY HAVING JURISDICTION



- SYSTEM DESCRIPTION
1. DOORS SHOWN CLOSED AND LOCKED.
 2. VALID CREDENTIAL ON EITHER CR91 WILL RELEASE LOCK.
 3. CR2 MUST BE USED FOR PROPER CR91 OPERATION.

DRAWN BY: TG
 CHK'D BY:
 APP'D BY:

PROJECT NAME
 IR - SYSTEMIZER
 TYPICAL WIRING

TITLE
 2 CT500, 510, CR91

LOCKNETICS
 Security Engineering

DWG/PROJECT NO.
 PAGE 1 OF 1

REV.