

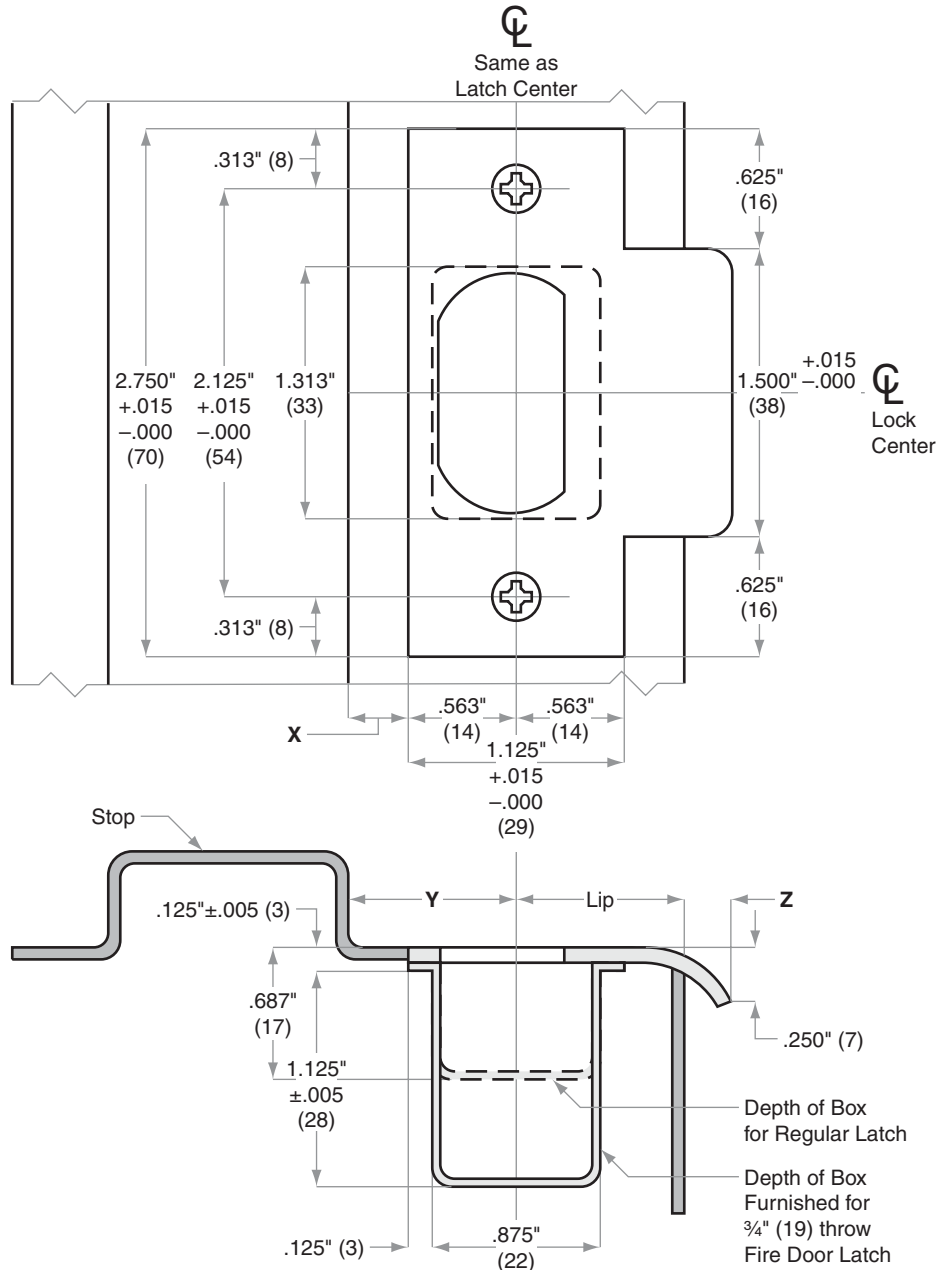
# Strikes

10-001, 10-013, 10-016, 10-019

<b>Jamb Type:</b>	Metal
<b>Style:</b>	T-Strike, Square Corner
<b>Standard for:</b>	A-Series   B250-Series   S-Series
<b>Optional for:</b>	AL-Series   F-Series   D-Series Knobs   ND-Series Levers

**NOTE:**

1. Dimensions X and Y are variables dependent on door thickness
2. Curved strike extension beyond jamb at Z must not be less than 3/16" (5) to ensure proper functioning of latch bolt
3. 1 1/8" (29) Lip length for 1 3/8" (35) to 1 3/4" (44) doors. Other lengths available
4. Strike location on frames must be adjusted for thickness of door silencers, when used



Dimensions shown in parentheses ( ) are in millimeters

**Job:** \_\_\_\_\_

**Date:** \_\_\_\_\_

**Door Thickness:** \_\_\_\_\_

**Remarks:** \_\_\_\_\_

**TEMPLATE  
J929**