

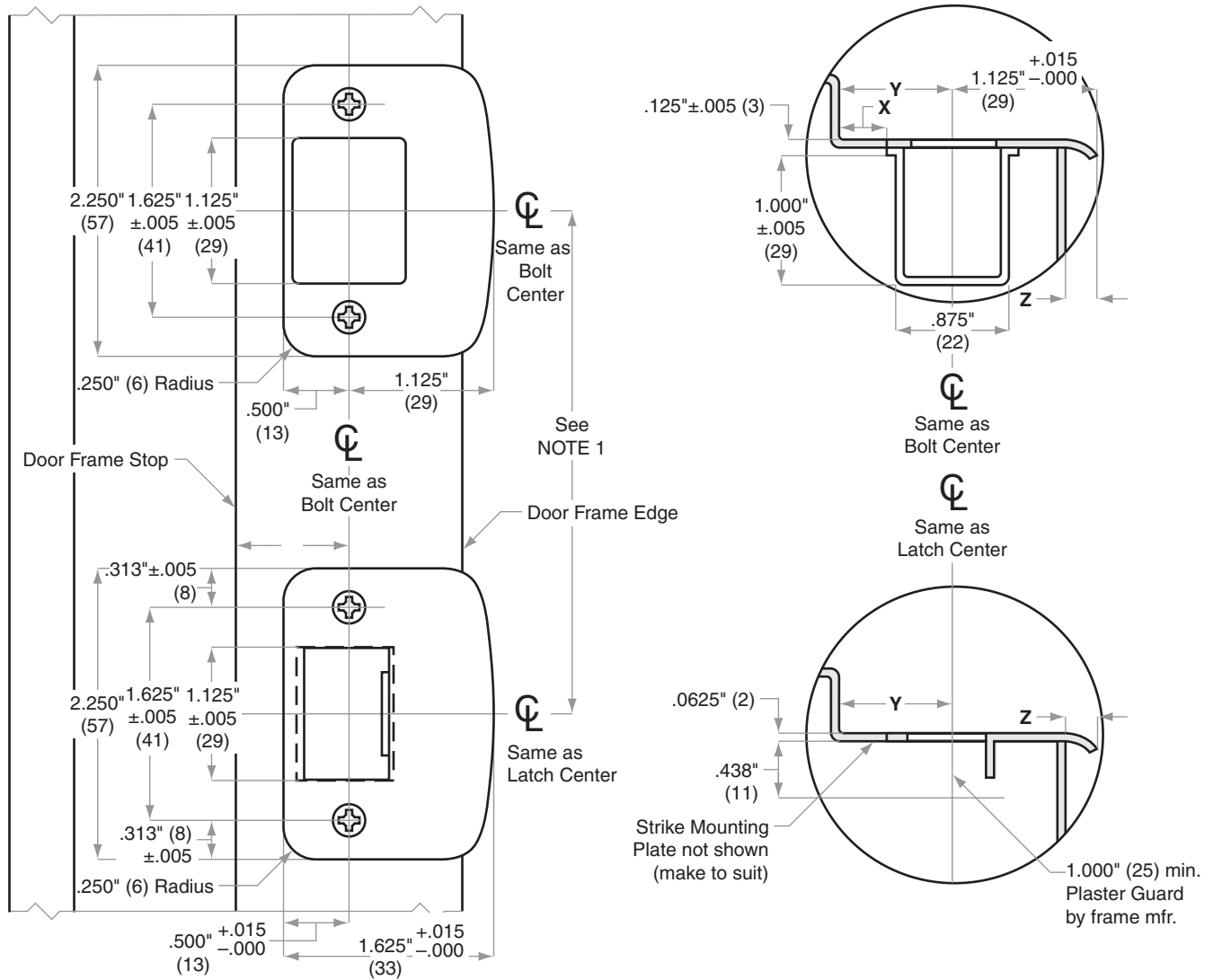
# Strikes, Combination

10-257=10-092x10-027

**Jamb Type:** Metal  
**Style:** Combination  
**Standard for:**  
**Optional for:** F/FA300-Series | H-Series | S200-Series

**NOTE:**

1. 4.000" (102) For H- and S200-Series  
 4.000" (102) minimum for F360/362  
 5.500" (138) minimum for FA360/362
2. Dimensions X, Y and Z are variables dependent on door thickness
3. Strike location on frames must be adjusted for thickness of door silencers when used



Dimensions shown in parentheses ( ) are in millimeters

**Job:** \_\_\_\_\_  
**Date:** \_\_\_\_\_  
**Door Thickness:** \_\_\_\_\_  
**Remarks:** \_\_\_\_\_

**TEMPLATE  
 J915**