

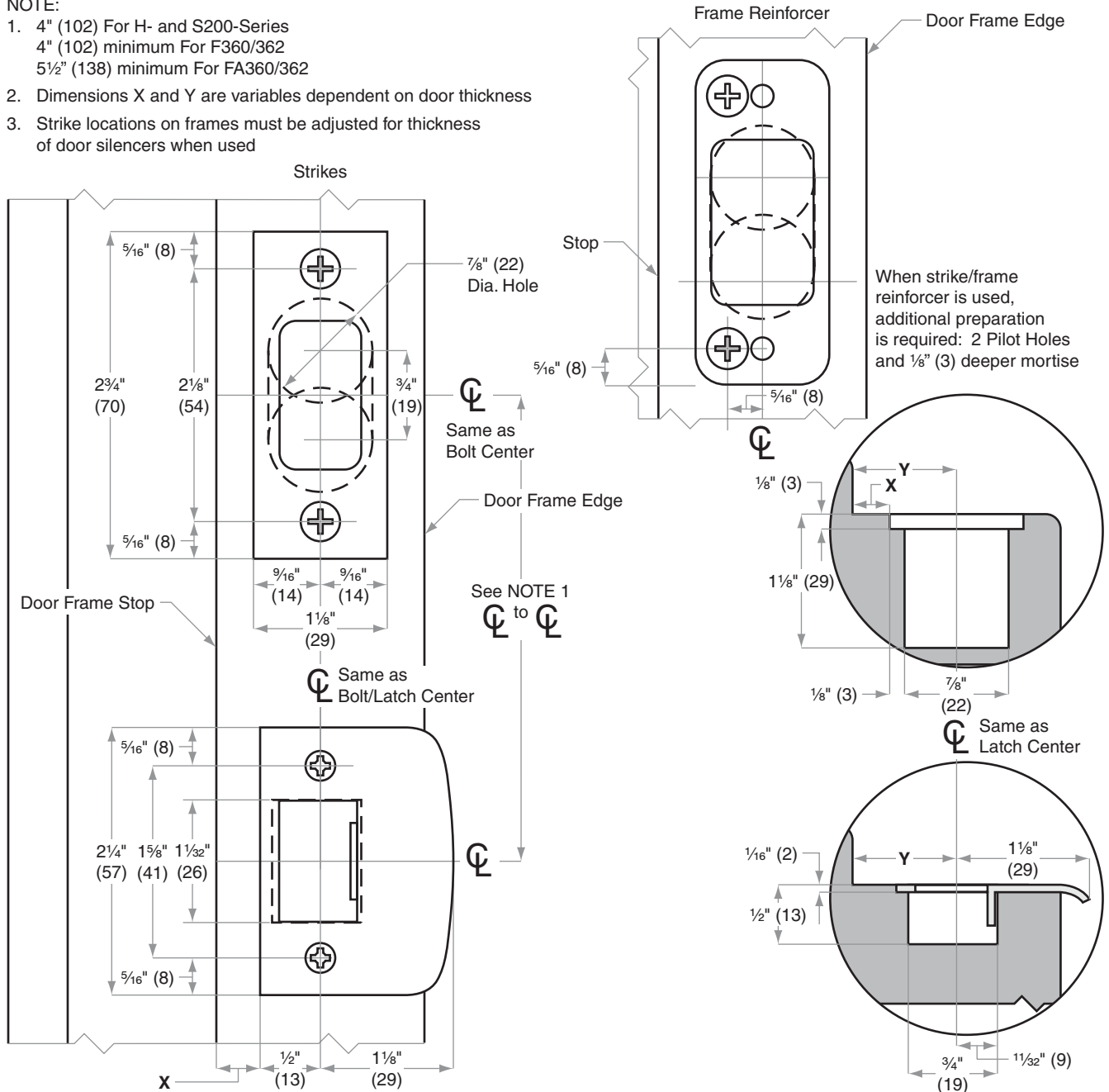
Strikes, Combination

10-252=10-055x10-026, 10-254=10-094x10-026, 10-248=10-063x10-094

Jamb Type: Wood
Style: Combination
Standard for: F300-Series
Optional for: H-Series | S200-Series

NOTE:

- 4" (102) For H- and S200-Series
 4" (102) minimum For F360/362
 5½" (138) minimum For FA360/362
- Dimensions X and Y are variables dependent on door thickness
- Strike locations on frames must be adjusted for thickness of door silencers when used



Dimensions shown in parentheses () are in millimeters

Job: _____
Date: _____
Door Thickness: _____
Remarks: _____

**TEMPLATE
 J905**