

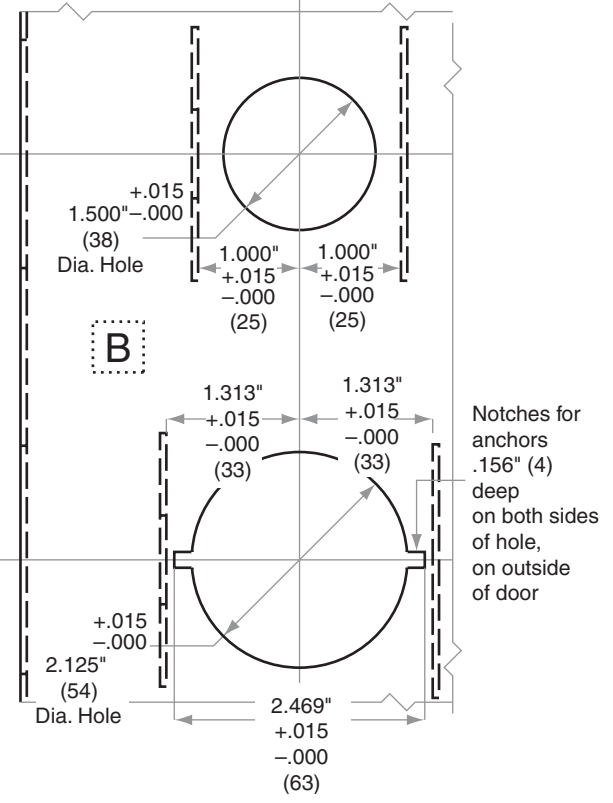
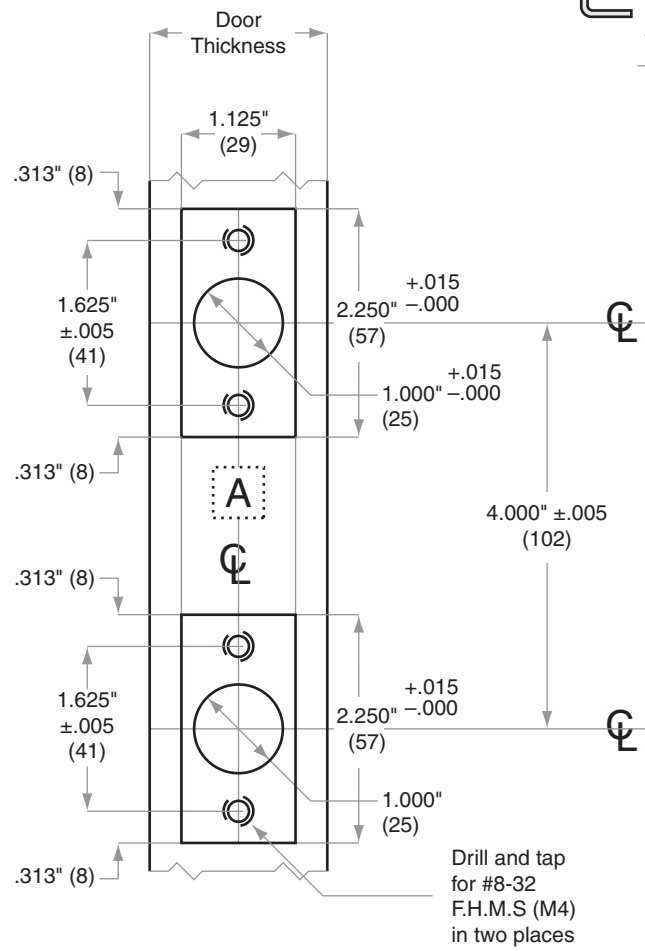
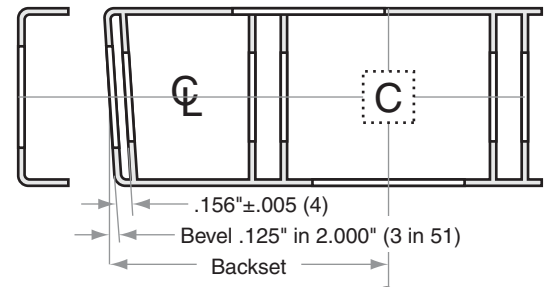
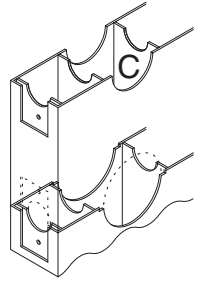
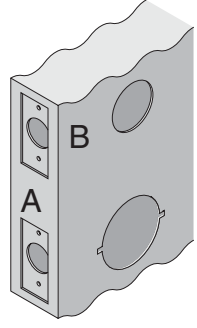
S200-Series

S210, S251, S270, S280

- Door Type:** Metal, Flat or Beveled
- Door Thickness:** 1 3/8" (35mm)–2" (51mm)
- Faceplate:** Square Corner, 1 1/8" (29mm) wide
- Backsets:** S890-C, 2 3/8" (60mm) | S890-D, 2 3/4" (70mm) | S890-F, 5" (127mm)

Strikes located 4" (102) Centerline to Centerline, same as Latch and Bolt

For metal door installations, suitable reinforcement is required to support latch and bolt in center of door to prevent lateral movement



Dimensions shown in parentheses () are in millimeters

Job: _____

Date: _____

Door Thickness: _____

Remarks: _____

TEMPLATE
S890