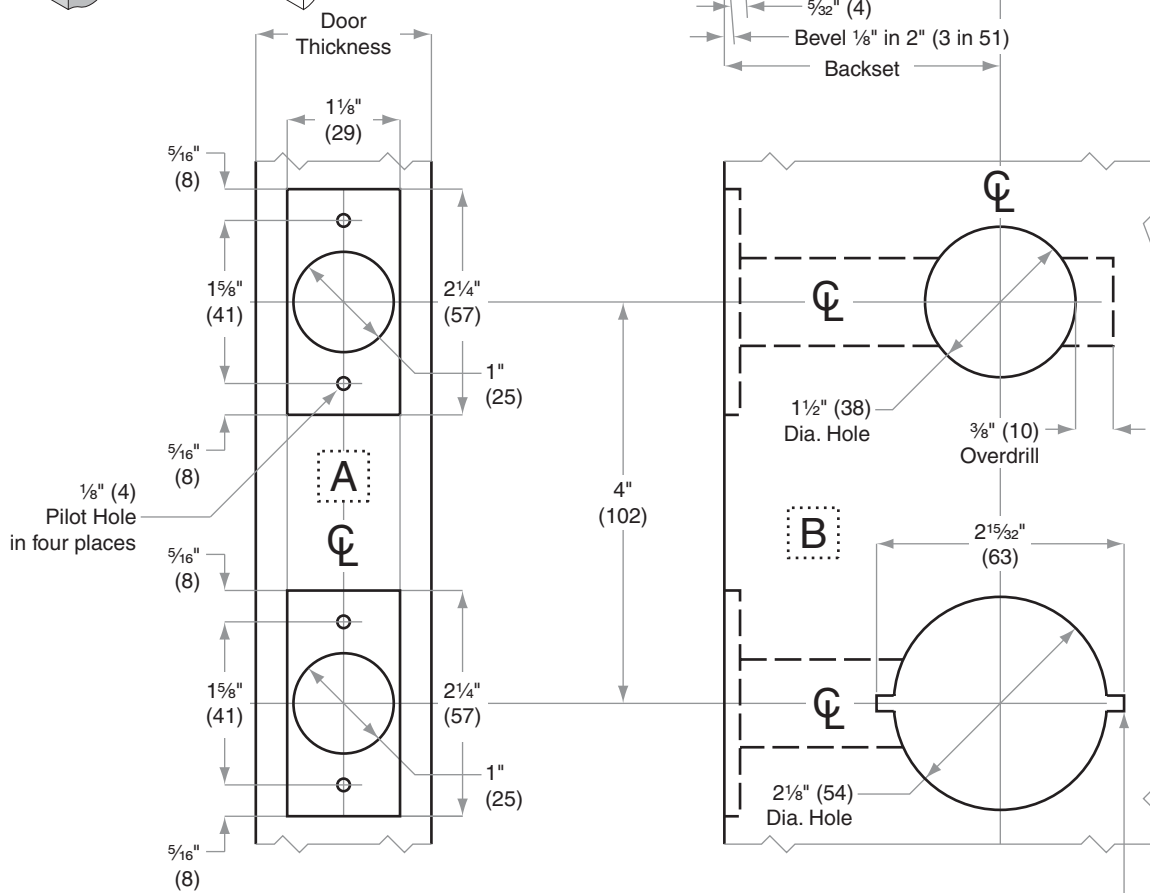
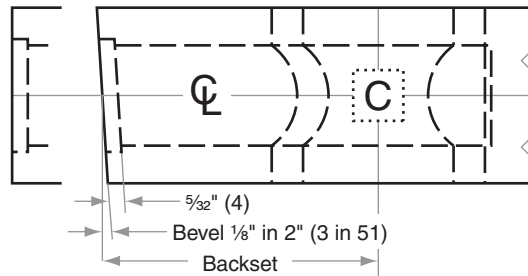
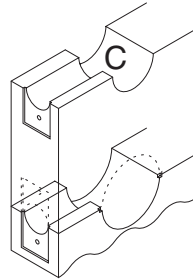
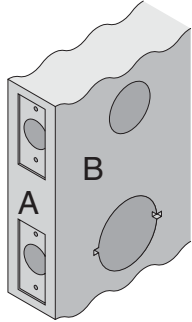


S200-Series

S210, S251, S270, S280

Door Type:	Wood or Composite, Flat or Beveled
Door Thickness:	1 3/8" (35mm)–2" (51mm)
Faceplate:	Square Corner, 1 1/8" (29mm) wide
Backsets:	S889-C, 2 3/8" (60mm) S889-D, 2 3/4" (70mm) S889-F, 5" (127mm)

Strikes located 4" (102) Centerline to Centerline, same as Latch and Bolt



Dimensions shown in parentheses () are in millimeters

Job: _____

Date: _____

Door Thickness: _____

Remarks: _____

TEMPLATE
S889