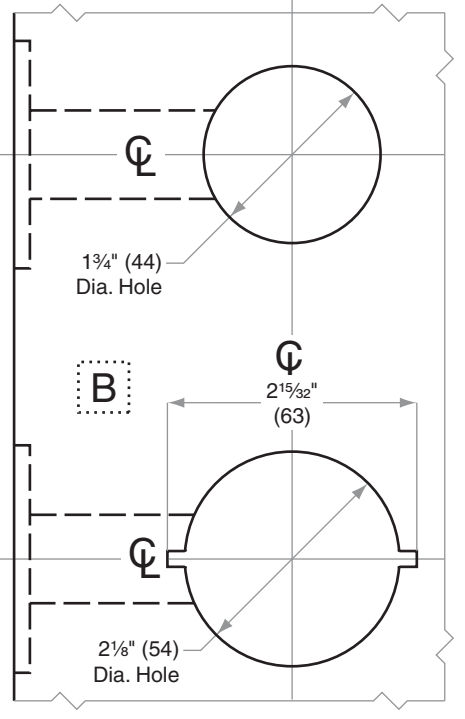
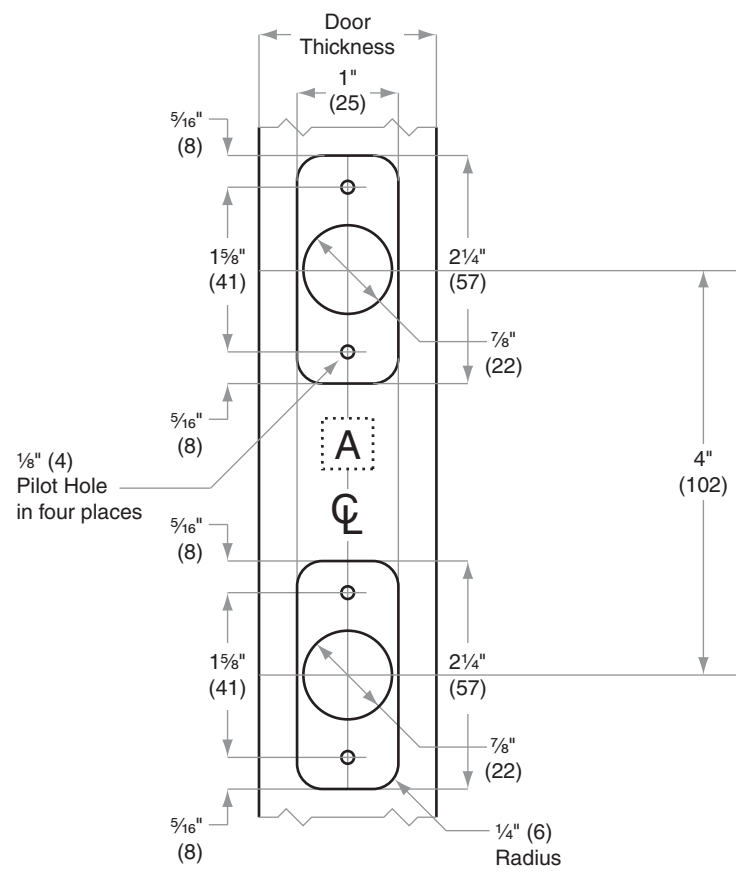
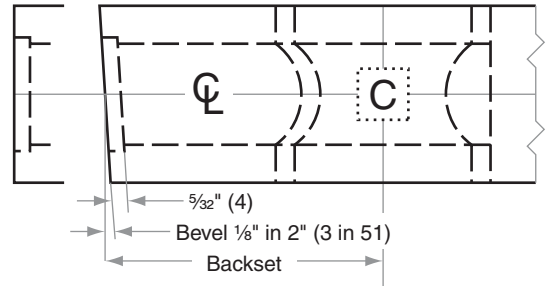
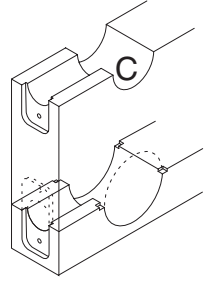
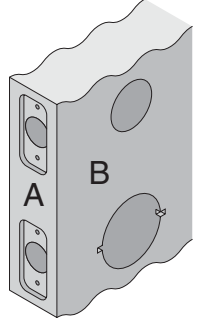


S200-Series

S210, S251, S270, S280

- Door Type:** Wood or Composite, Flat or Beveled
- Door Thickness:** 1 3/8" (35mm)–2" (51mm)
- Faceplate:** Round Corner, 1/4" (6mm) radius, 1" (25mm) wide
- Backsets:** S888-C, 2 3/8" (60mm) | S888-D, 2 3/4" (70mm) | S888-F, 5" (127mm)



Dimensions shown in parentheses () are in millimeters

Job: _____

Date: _____

Door Thickness: _____

Remarks: _____

TEMPLATE
S888