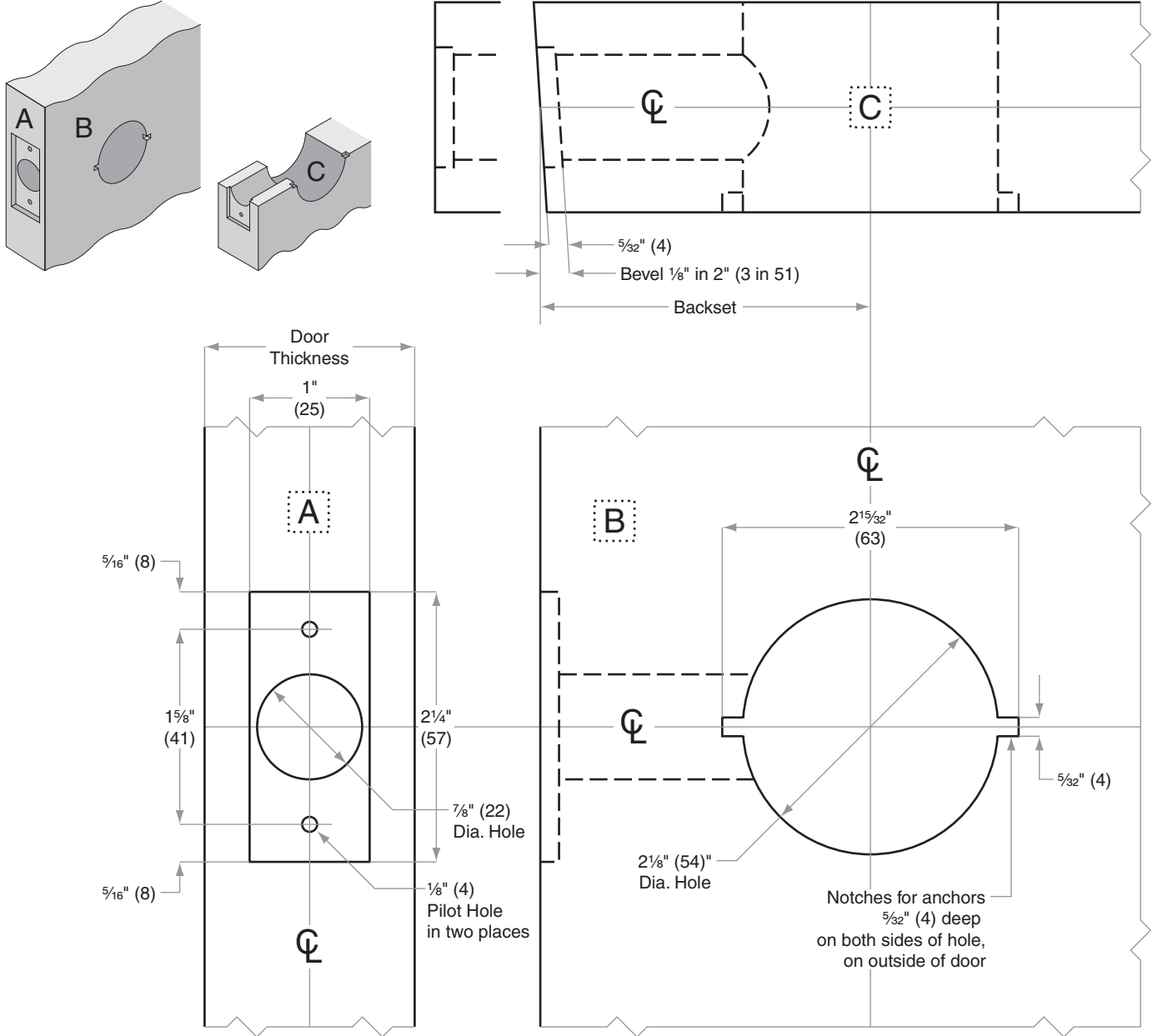


S-Series

S10-S80

- Door Type:** Wood or Composite, Flat or Beveled
- Door Thickness:** 1 3/8" (35mm)–2" (51mm) except S40D: 1 3/8" (35mm)–1 7/8" (47mm)
- Faceplate:** Square Corner, 1" (25mm) wide
- Backsets:** S876-C, 2 3/8" (60mm) | S876-D, 2 3/4" (70mm) | S876-F, 5" (127mm)



Dimensions shown in parentheses () are in millimeters

Job: _____

Date: _____

Door Thickness: _____

Remarks: _____

TEMPLATE
S876