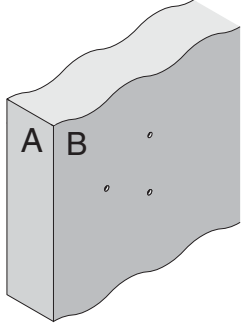


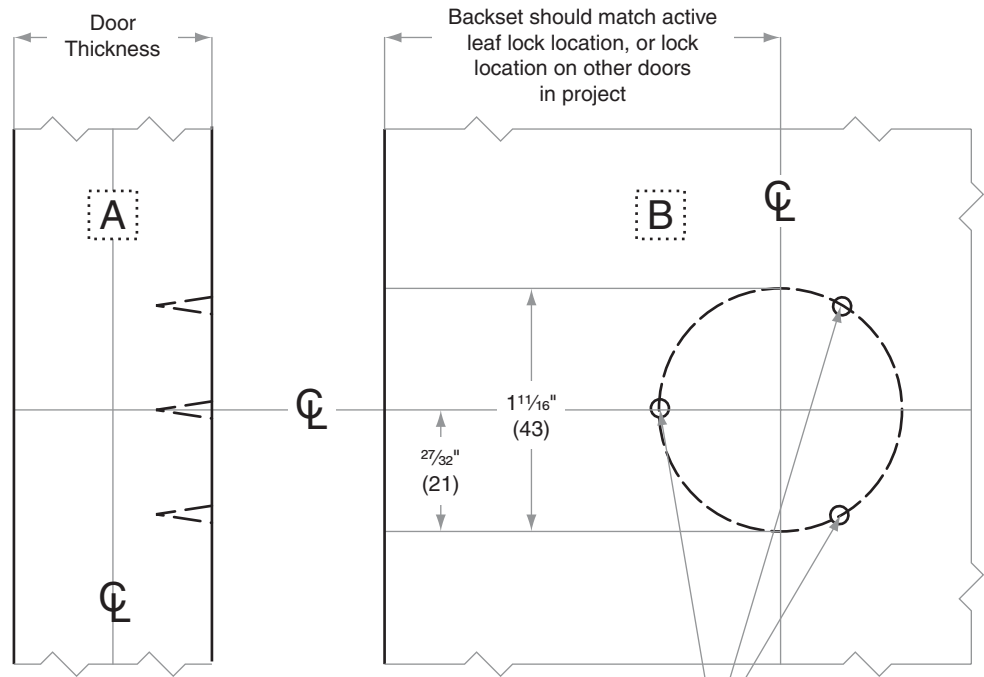
# A-Series

## A170

<b>Door Type:</b>	Wood or Composite
<b>Door Thickness:</b>	Various
<b>Faceplate:</b>	None
<b>Backsets:</b>	Any, surface mounted



This door preparation is oriented for Right Hand (RH) and Right Hand Reverse (RHR) doors. For Left Hand (LH) and Left Hand Reverse (LHR) doors, mounting screw location must be rotated 180°



Pilot Holes at 120° for #8 wood screws (M4)  
Three holes, one side only

Dimensions shown in parentheses ( ) are in millimeters

**Job:** \_\_\_\_\_

**Date:** \_\_\_\_\_

**Door Thickness:** \_\_\_\_\_

**Remarks:** \_\_\_\_\_

**TEMPLATE  
A754**