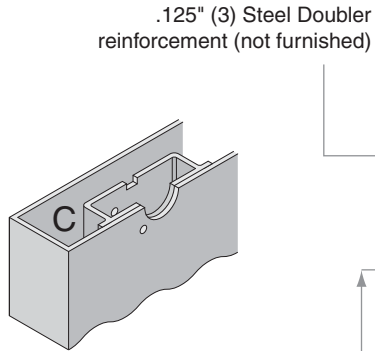
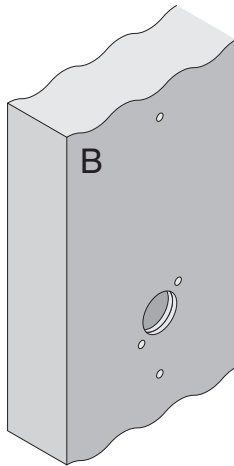


# L/LV-Series

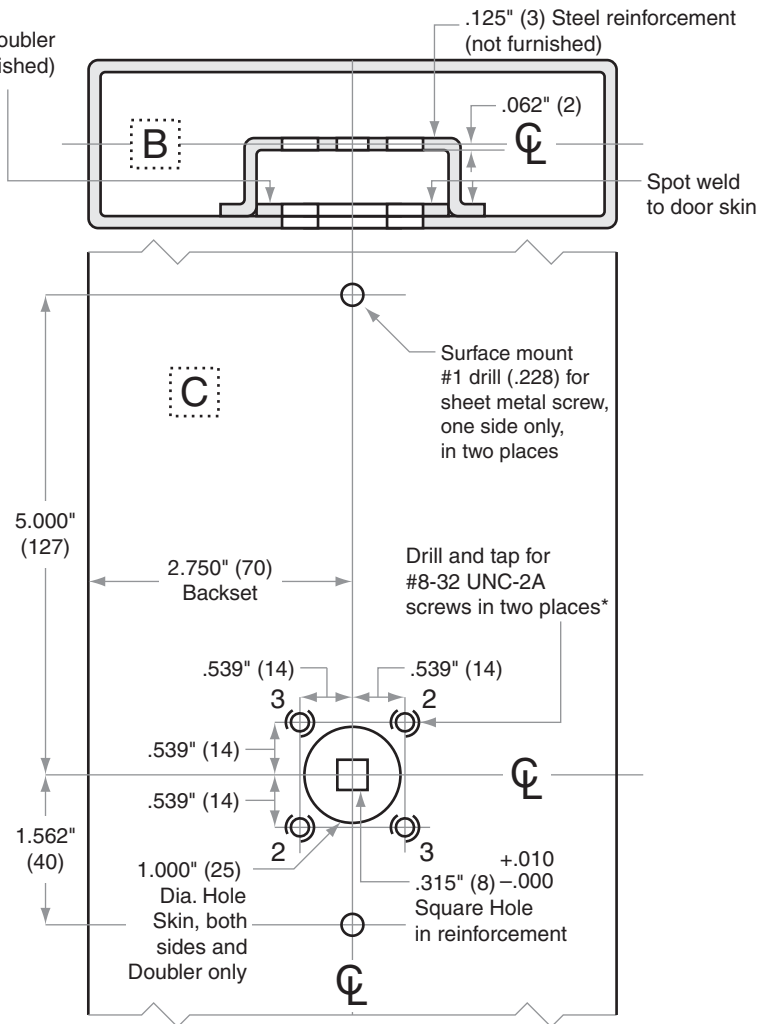
## L0170

Door Type: Metal, flat or beveled

Trim: Escutcheon



### Suitable reinforcement required for metal door installation



**\*Drill two holes at locations #2 for outside RH/RHR or  
Drill two holes at locations #3 for outside LH/LHR**

Dimensions shown in parentheses () are in millimeters

Template is not to scale.

Job: \_\_\_\_\_

**TEMPLATE**

Date: \_\_\_\_\_

Door Thickness: \_\_\_\_\_

**L782**

Remarks: \_\_\_\_\_