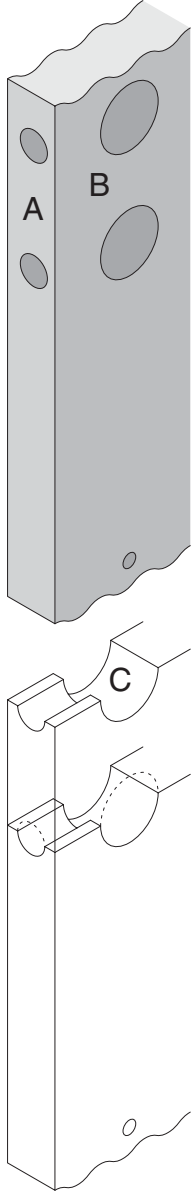


# F/FA-Series

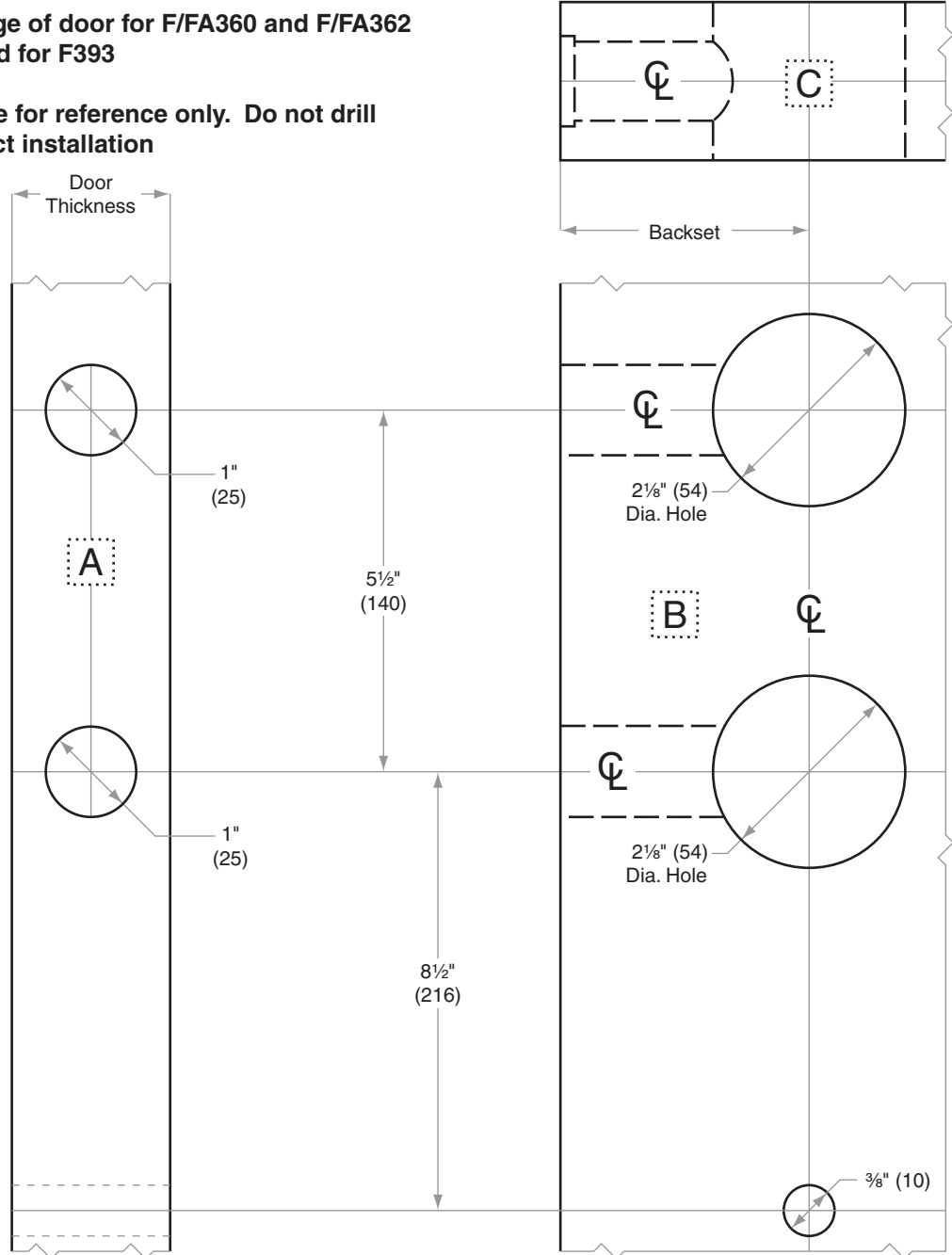
**F360, F362, F393 (adjustable through bolt); FA360, FA362, FA393**

- Door Type:** Wood or Composite, Flat  
**Door Thickness:** 1½" (41mm)–1¾" (44mm)  
**Faceplate:** Circular Drive-In  
**Backsets:** F776-C, 2¾" (60mm) | F776-D, 2¾" (70mm)



**Prepare edge of door for F/FA360 and F/FA362**  
**Not required for F393**

**Bottom hole for reference only. Do not drill until product installation**



Dimensions shown in parentheses ( ) are in millimeters

**Job:** \_\_\_\_\_

**Date:** \_\_\_\_\_

**Door Thickness:** \_\_\_\_\_

**Remarks:** \_\_\_\_\_

**TEMPLATE**  
**F776**