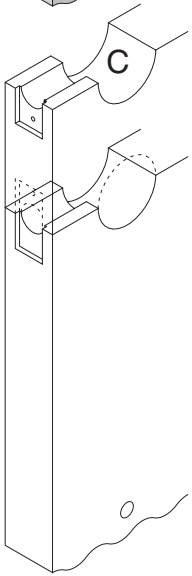
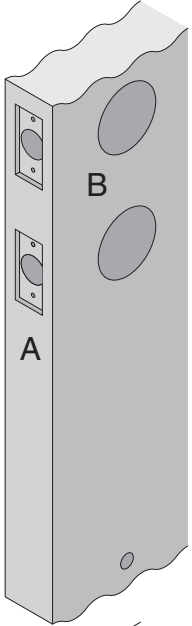


F/FA-Series

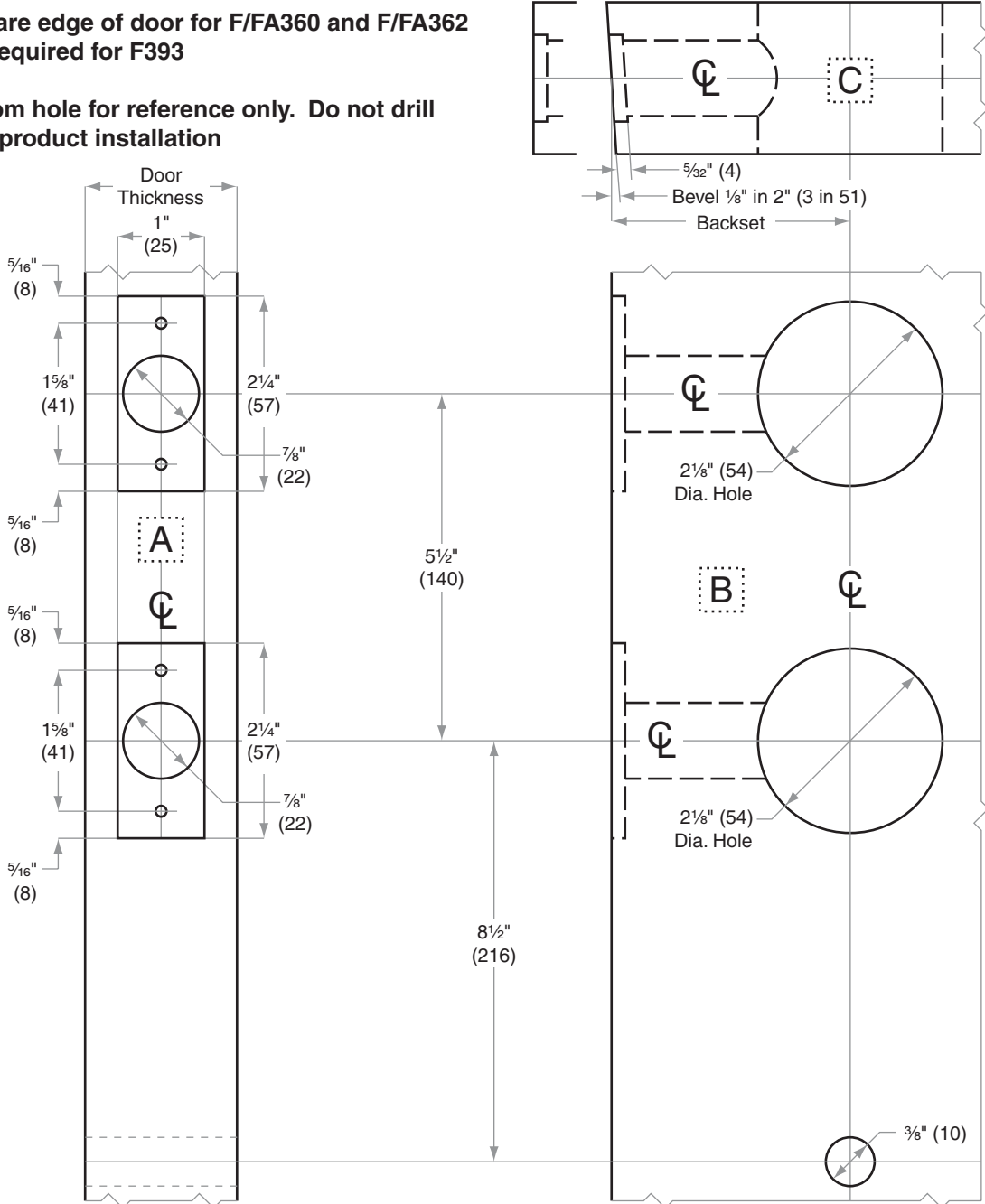
F360, F362, F393 (adjustable through bolt); FA360, FA362, FA393

- Door Type:** Wood or Composite, Flat or Beveled
- Door Thickness:** 1 5/8" (41mm)–1 3/4" (44mm)
- Faceplate:** Square Corner, 1" (25mm) wide
- Backsets:** F774-C, 2 3/8" (60mm) | F774-D, 2 3/4" (70mm)



Prepare edge of door for F/FA360 and F/FA362
Not required for F393

Bottom hole for reference only. Do not drill until product installation



Dimensions shown in parentheses () are in millimeters

Job: _____

Date: _____

Door Thickness: _____

Remarks: _____

TEMPLATE
F774