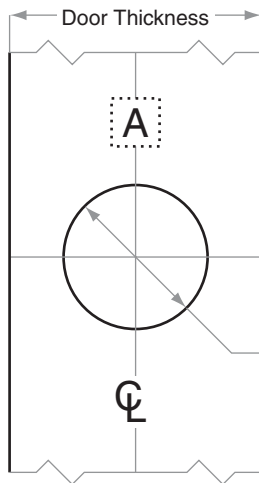
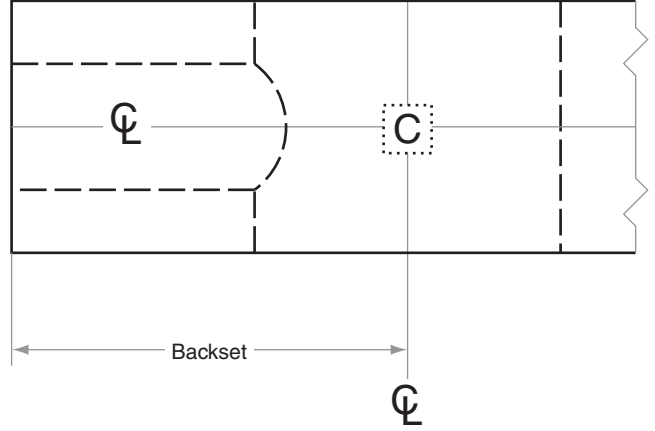
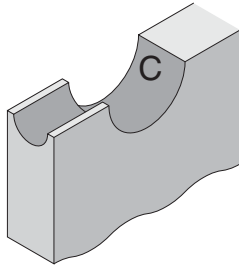
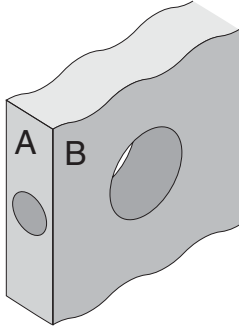


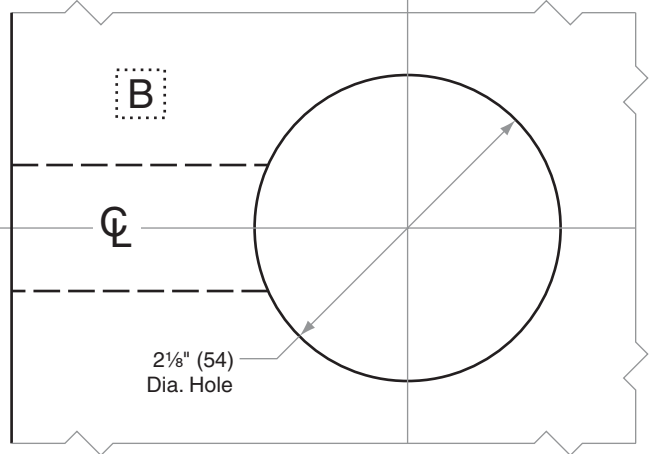
# F/FA-Series

## F10-F80, FA10-FA80

<b>Door Type:</b>	Wood or Composite, Flat
<b>Door Thickness:</b>	1 $\frac{3}{8}$ " (35mm)–1 $\frac{3}{4}$ " (44mm)
<b>Faceplate:</b>	Circular Drive-In
<b>Backsets:</b>	F438-C, 2 $\frac{3}{8}$ " (60mm)   F438-D, 2 $\frac{3}{4}$ " (70mm)   F438-F, 5" (127mm)



1" (25)  
Dia. Hole



2 $\frac{1}{8}$ " (54)  
Dia. Hole

Dimensions shown in parentheses () are in millimeters

**Job:** \_\_\_\_\_

**Date:** \_\_\_\_\_

**Door Thickness:** \_\_\_\_\_

**Remarks:** \_\_\_\_\_

TEMPLATE  
**F438**