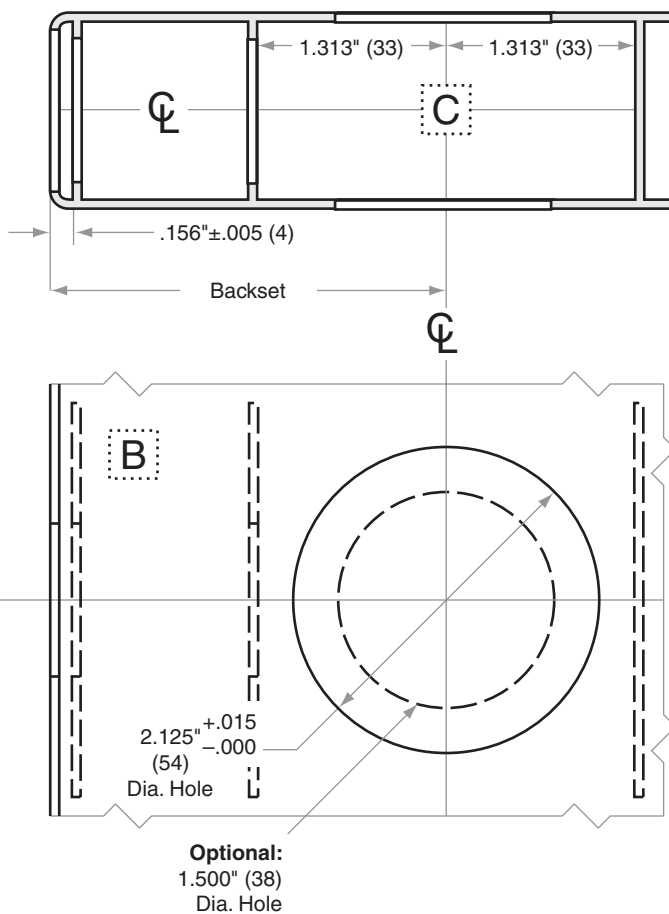
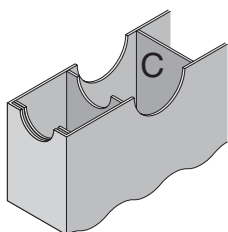
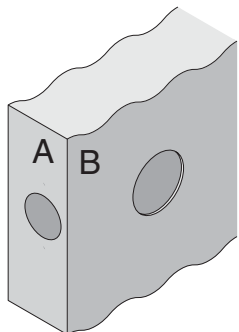


# B600/700/800-Series

B660/661/662/663, B760/761/762/763, B860/861/862/863

<b>Door Type:</b>	Metal, Flat
<b>Door Thickness:</b>	1 $\frac{3}{8}$ " (35mm)–2 $\frac{1}{2}$ " (64mm)
<b>Faceplate:</b>	Circular Drive-In
<b>Backsets:</b>	B892-C, 2 $\frac{3}{8}$ " (60mm)   B892-D, 2 $\frac{3}{4}$ " (70mm)   B892-E, 3 $\frac{3}{4}$ " (95mm)   B892-F, 5" (127mm)

For metal door installations, suitable reinforcement is required to support latch in center of door and to prevent lateral movement



Dimensions shown in parentheses ( ) are in millimeters

Job: \_\_\_\_\_

Date: \_\_\_\_\_

Door Thickness: \_\_\_\_\_

Remarks: \_\_\_\_\_

TEMPLATE  
**B892**