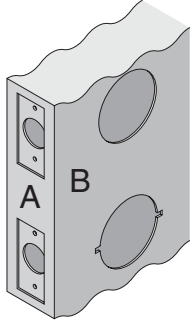


H-Series

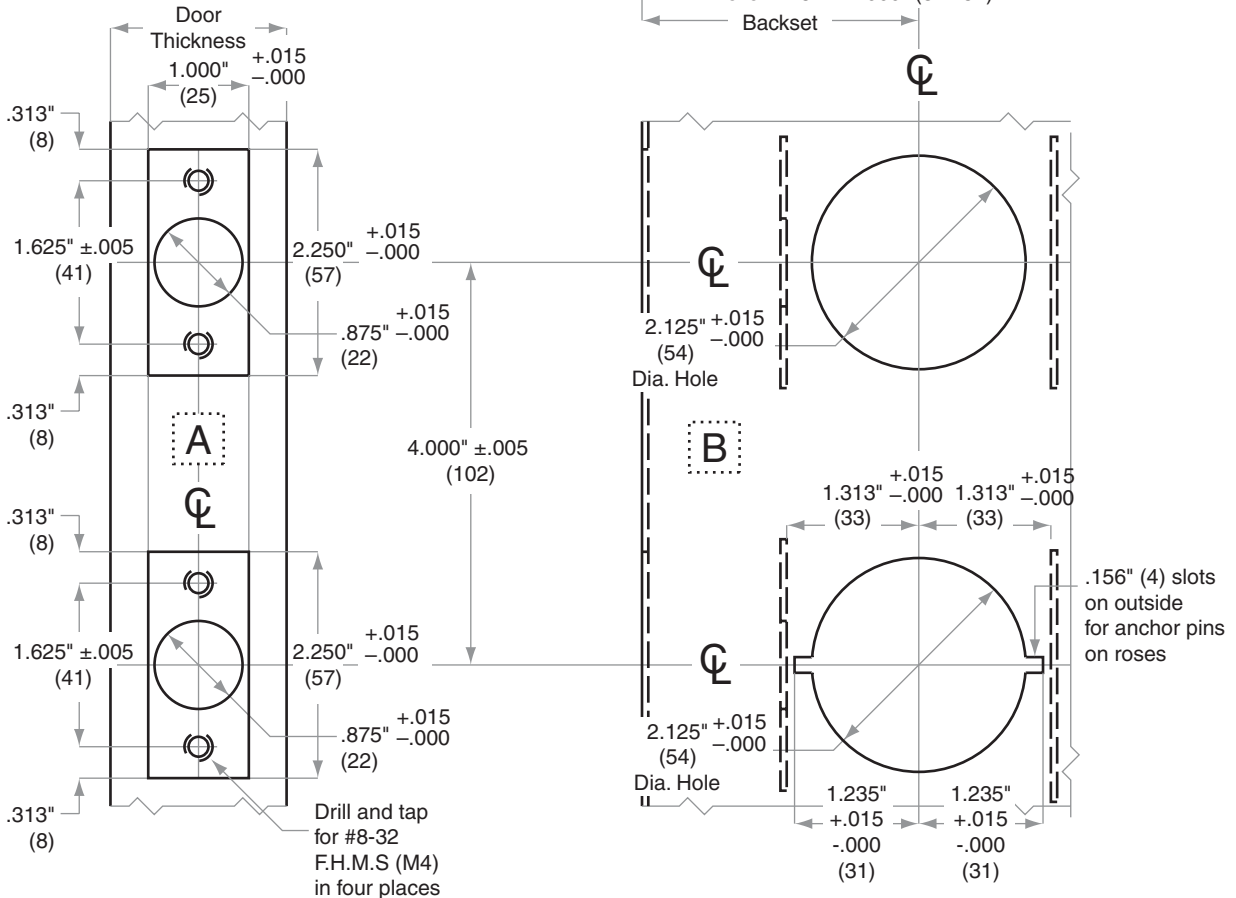
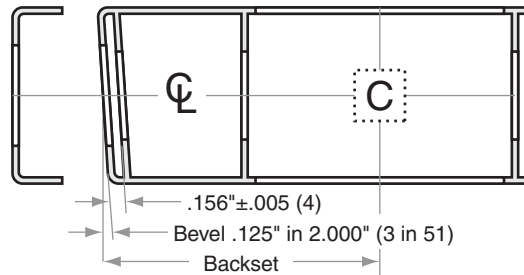
H110H, H153H, H180H, H185H

- Door Type:** Metal, Flat or Beveled
- Door Thickness:** 1 $\frac{3}{8}$ " (35mm)–1 $\frac{3}{4}$ " (44mm)
- Faceplate:** Square Corner, 1" (25mm) wide
- Backsets:** H873-C, 2 $\frac{3}{8}$ " (60mm) | H873-D, 2 $\frac{3}{4}$ " (70mm)



For metal door installations, suitable reinforcement is required to support latch in center of door to prevent lateral movement

This template is for use with the adapter ring for a 2 $\frac{1}{8}$ " (54) prepped hole, both upper and lower



Dimensions shown in parentheses () are in millimeters

Job: _____

Date: _____

Door Thickness: _____

Remarks: _____

**TEMPLATE
H873**