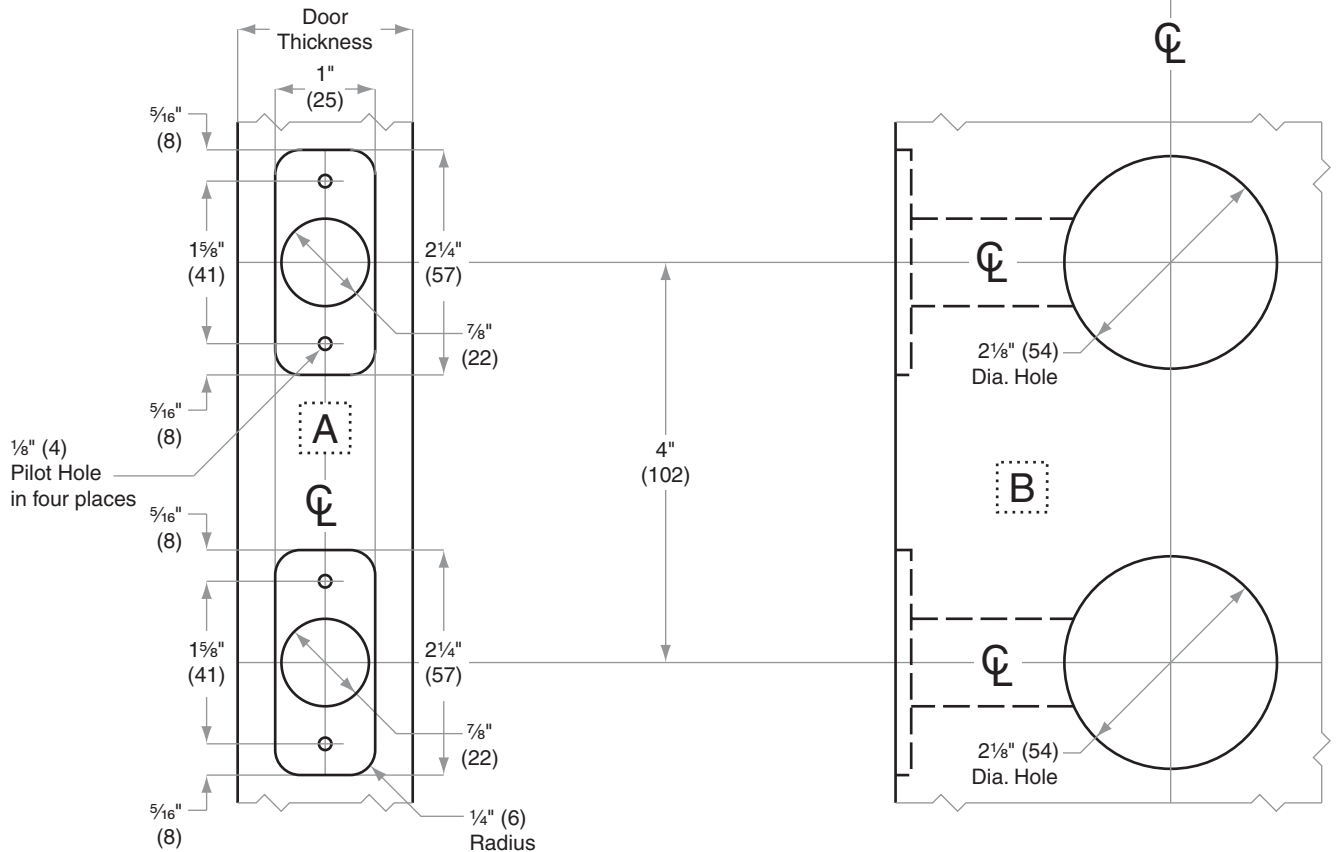
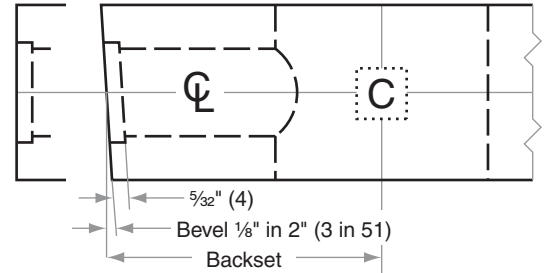
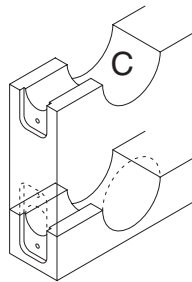
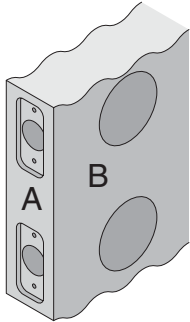


H-Series

H110H, H153H, H180H, H185H

- Door Type:** Wood or Composite, Flat or Beveled
- Door Thickness:** 1 3/8" (35mm)–1 3/4" (44mm)
- Faceplate:** Round Corner, 1/4" (6mm) Radius, 1" (25mm) wide
- Backsets:** H774-C, 2 3/8" (60mm) | H774-D, 2 3/4" (70mm)

This template is for use with the adapter ring for a 2 1/8" (54) prepped hole, both upper and lower



Dimensions shown in parentheses () are in millimeters

Job: _____

Date: _____

Door Thickness: _____

Remarks: _____

**TEMPLATE
H774**