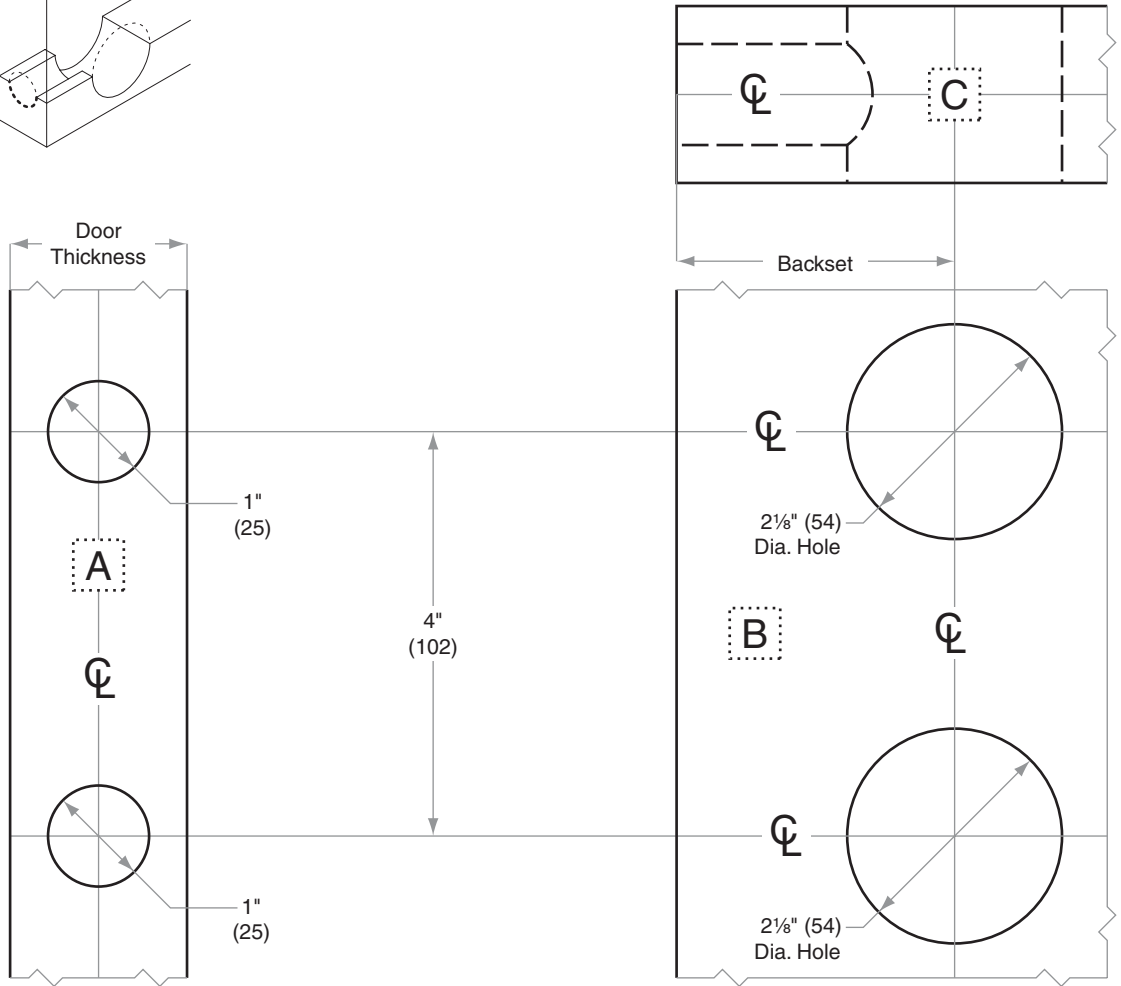
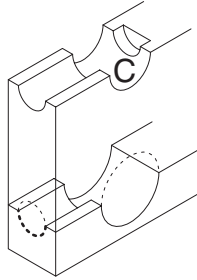
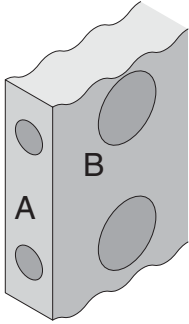


H-Series

H110H, H153H, H180H, H185H

- Door Type:** Wood or Composite, Flat
- Door Thickness:** 1 $\frac{3}{8}$ " (35mm)–1 $\frac{3}{4}$ " (44mm)
- Faceplate:** Circular Drive-In
- Backsets:** H771-C, 2 $\frac{3}{8}$ " (60mm) | H771-D, 2 $\frac{3}{4}$ " (70mm)

This template is for use with the adapter ring for a 2 $\frac{1}{8}$ " (54) prepped hole, both upper and lower



Dimensions shown in parentheses () are in millimeters

Job: _____

Date: _____

Door Thickness: _____

Remarks: _____

**TEMPLATE
H771**