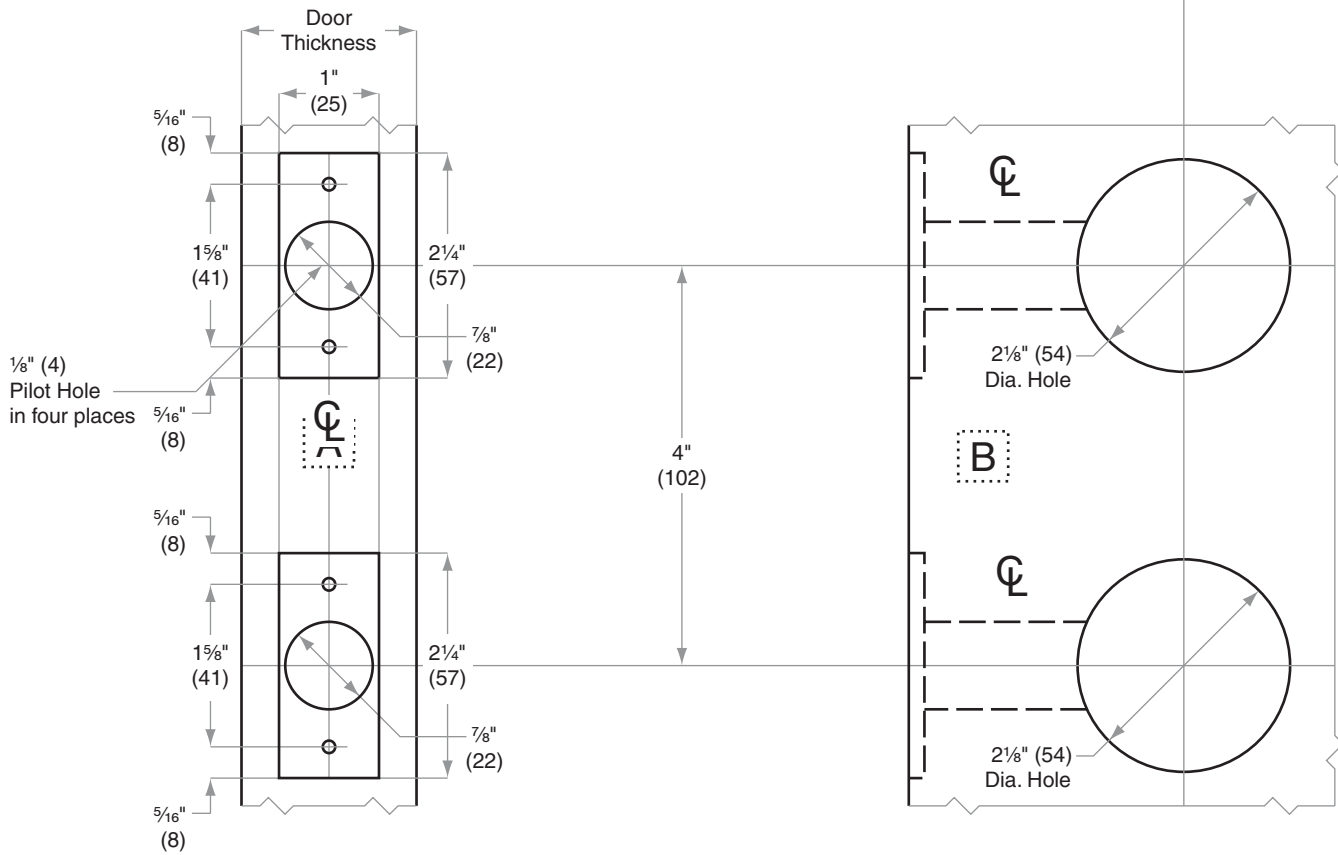
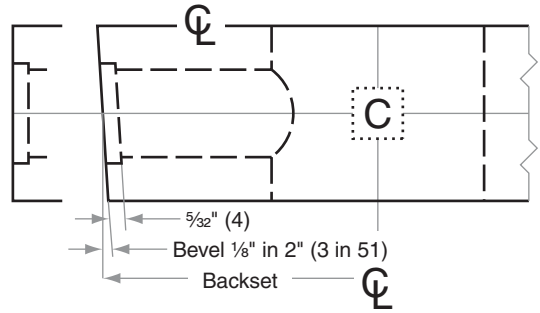
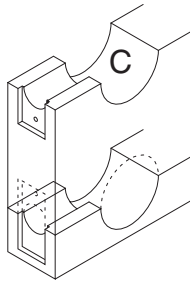
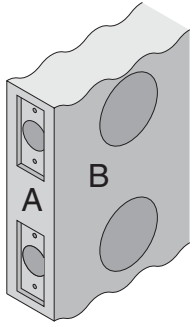


# H-Series

## H110H, H153H, H180H, H185H

<b>Door Type:</b>	Wood or Composite, Flat or Beveled
<b>Door Thickness:</b>	1 $\frac{3}{8}$ " (35mm)–1 $\frac{3}{4}$ " (44mm)
<b>Faceplate:</b>	Square Corner, 1" (25mm) wide
<b>Backsets:</b>	H769-C, 2 $\frac{3}{8}$ " (60mm)   H769-D, 2 $\frac{3}{4}$ " (70mm)

This template is for use with the adapter ring for a 2 $\frac{1}{8}$ " (54) prepped hole, both upper and lower



Dimensions shown in parentheses ( ) are in millimeters

**Job:** \_\_\_\_\_

**Date:** \_\_\_\_\_

**Door Thickness:** \_\_\_\_\_

**Remarks:** \_\_\_\_\_

**TEMPLATE  
H769**