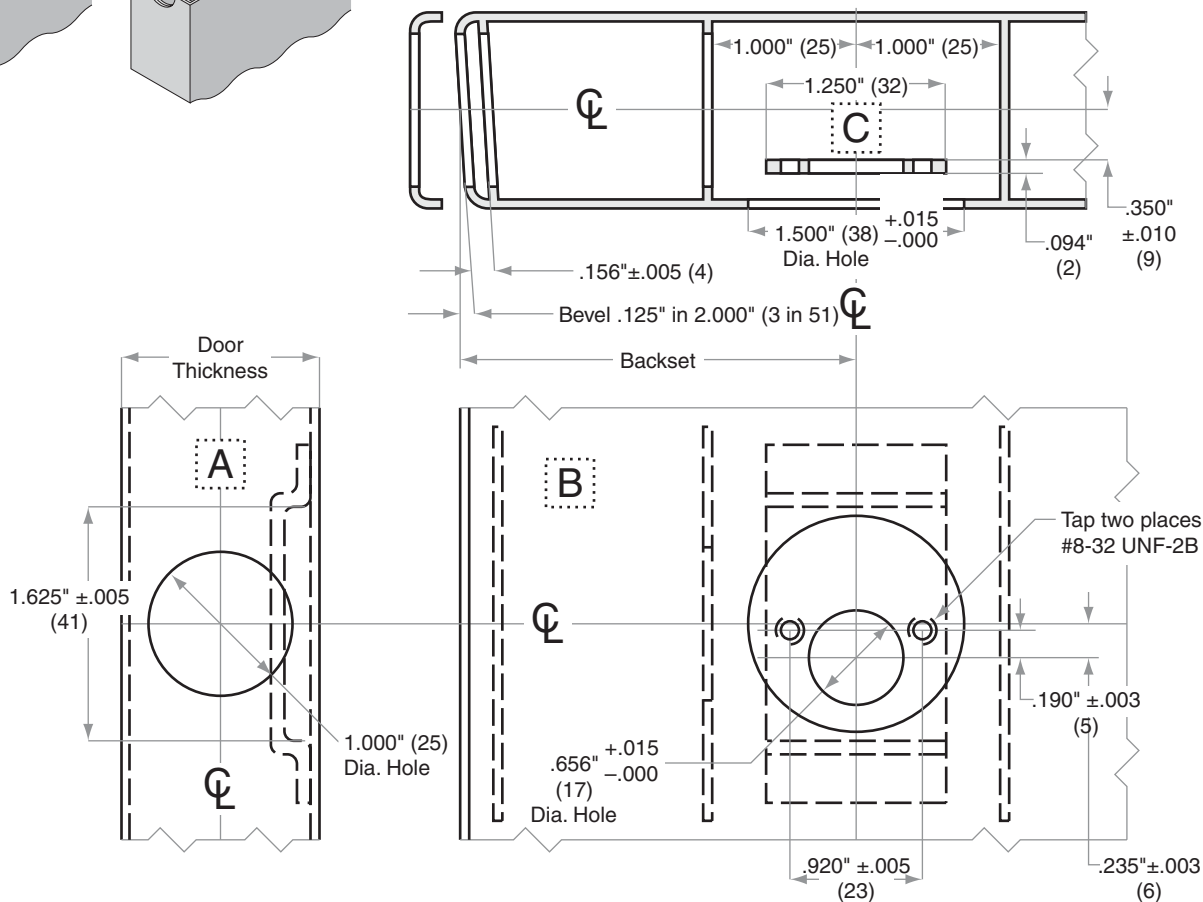
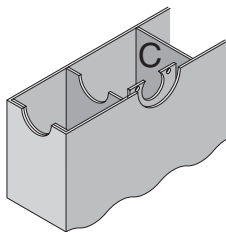
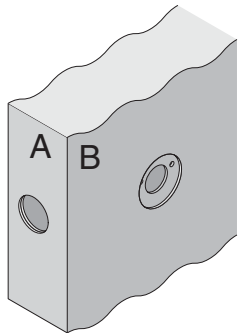


B500-Series

B580

Door Type:	Metal, Flat
Door Thickness:	1 3/8" (35mm)–2 1/4" (57mm)
Faceplate:	Circular Drive-In
Backsets:	B944-C, 2 3/8" (60mm) B944-D, 2 3/4" (70mm) B944-F, 5" (127mm)

For metal door installations, suitable reinforcement is required to support latch in center of door and to prevent lateral movement



Dimensions shown in parentheses () are in millimeters

Job: _____

Date: _____

Door Thickness: _____

Remarks: _____

TEMPLATE
B944