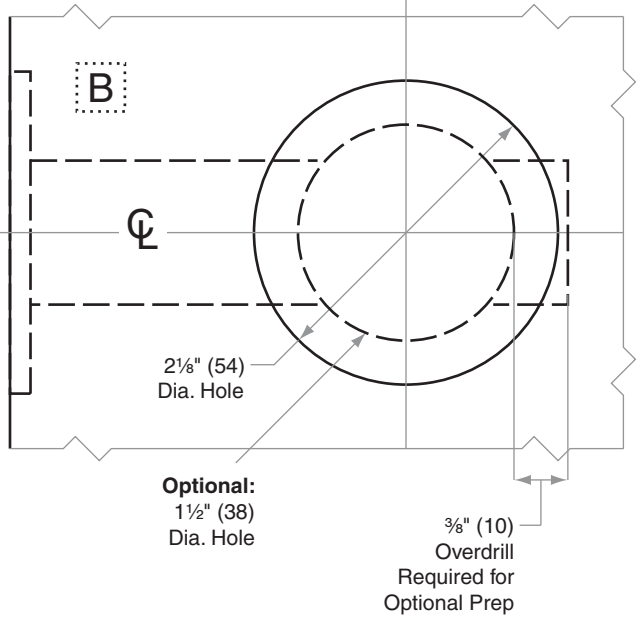
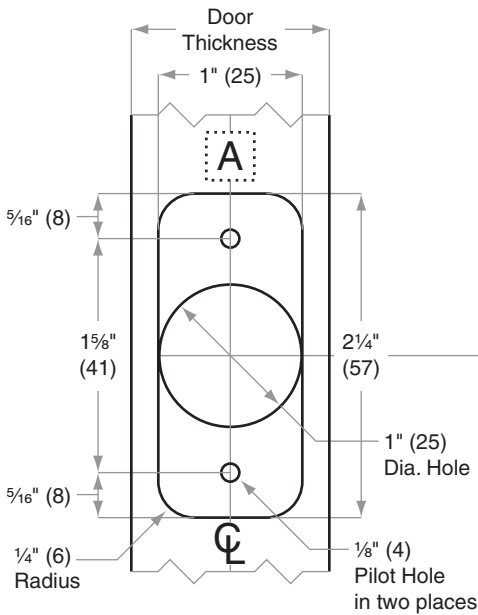
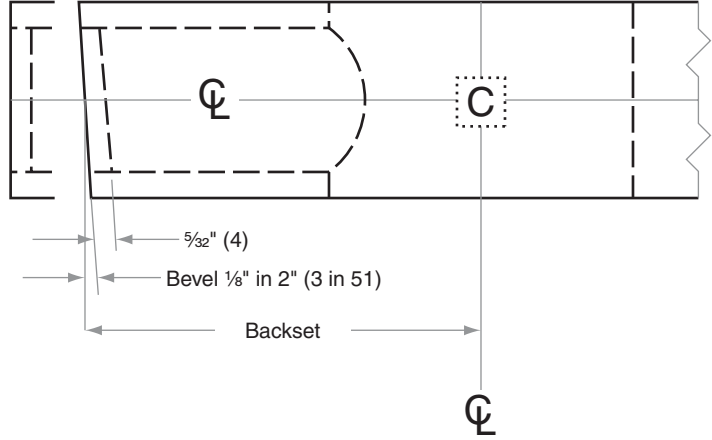
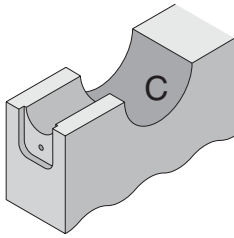
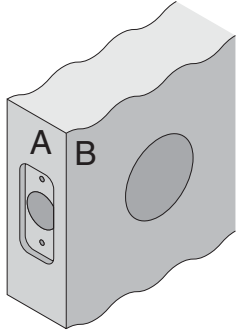


# B500-Series

## B560, B561, B562, B563

- Door Type:** Wood or Composite, Flat or Beveled
- Door Thickness:** 1 $\frac{3}{8}$ " (35mm)–1 $\frac{7}{8}$ " (48mm)
- Faceplate:** Round Corner,  $\frac{1}{4}$ " (6mm) Radius, 1" (25mm) wide
- Backsets:** B928-C, 2 $\frac{3}{8}$ " (60mm) | B928-D, 2 $\frac{3}{4}$ " (70mm) | B928-F, 5" (127mm)



Dimensions shown in parentheses ( ) are in millimeters

**Job:** \_\_\_\_\_

**Date:** \_\_\_\_\_

**Door Thickness:** \_\_\_\_\_

**Remarks:** \_\_\_\_\_

**TEMPLATE**  
**B928**